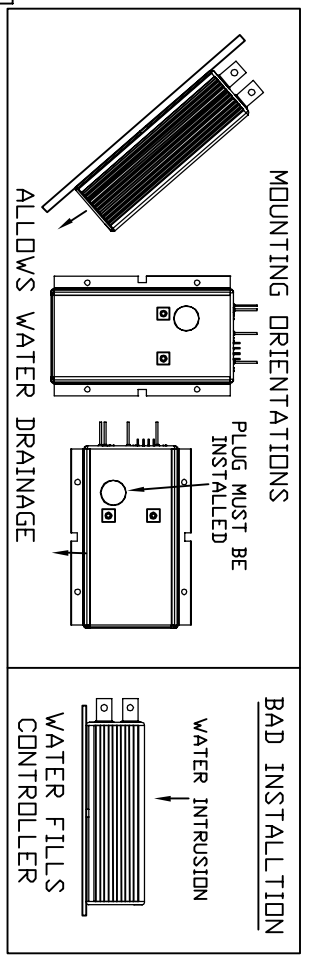
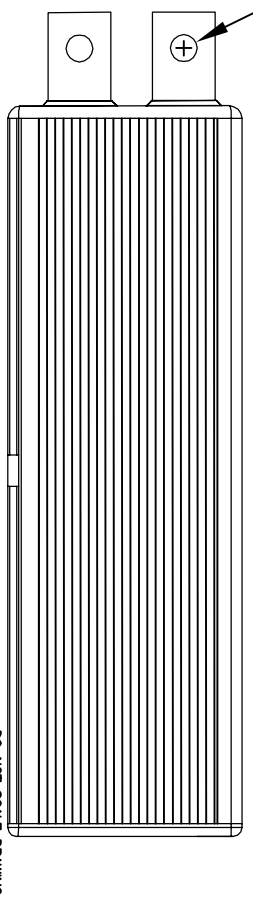
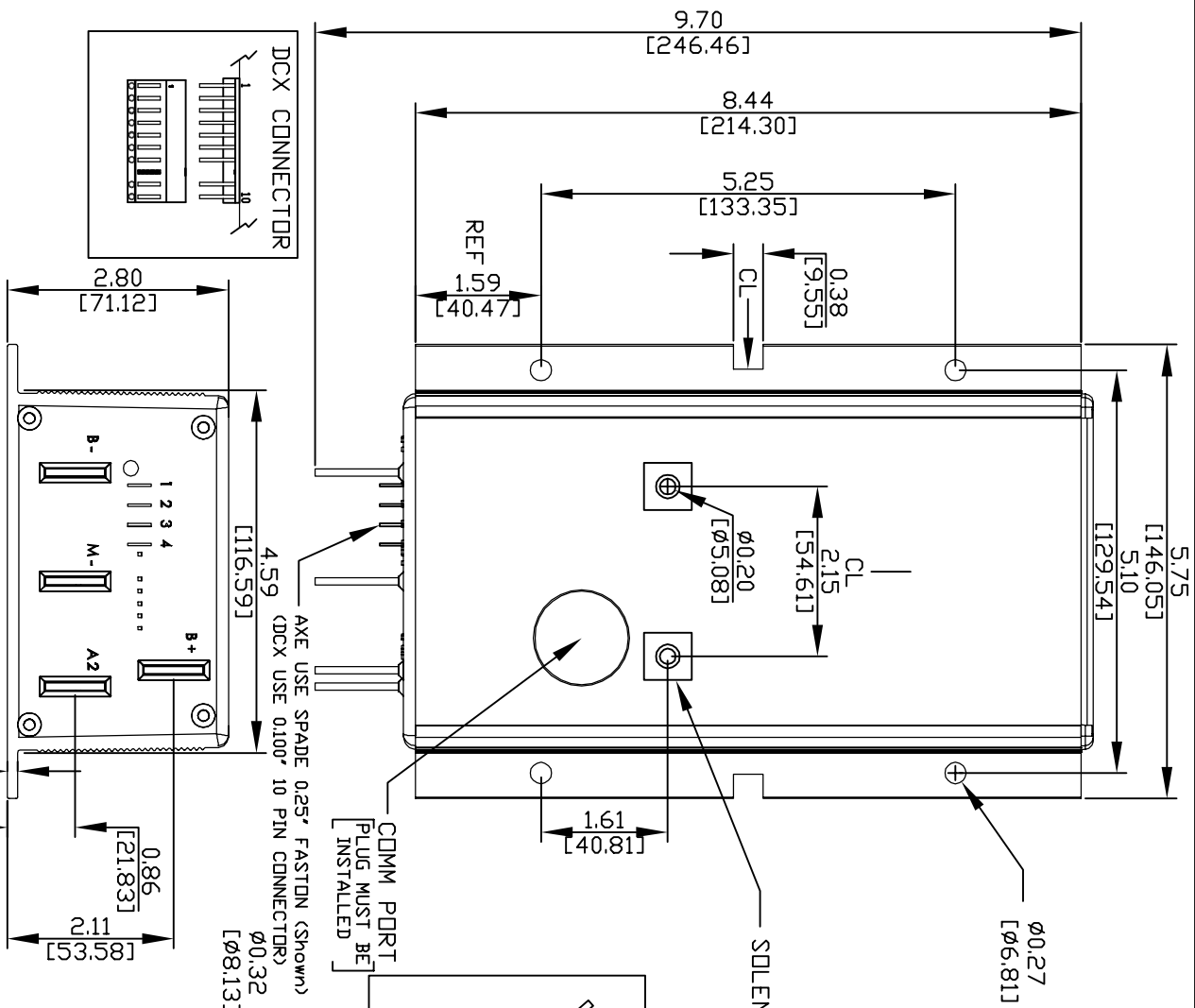


PART NO.	Doc100-036
----------	------------



CONTROLLER SPECIFICATIONS:
 *Material: Blue Anodized ALUMINUM
 *Thermal Compound: Optional
 *Heatsink mounted to 3/8" ALUMINUM plate, approx 144" sq in
 *Torque mounting screws to 20 ft./lbs

NOTES:

- > ALLTRAX RESERVES THE RIGHT TO CHANGE DOCUMENTATION WITHOUT NOTICE
- > ALLTRAX MAKES NO WARRANTY AS TO THE ACCURACY, SUFFICIENCY, OR SUITABILITY OF ANY TECHNICAL OR OTHER INFORMATION PROVIDED
- > SEE OPERATORS MANUAL FOR MORE INFORMATION

REVISIONS				DWG SCALE: NTS		TITLE	
REV.	ECO.	DATE	APVD	DRAWN	DATE	SIZE	DOCUMENT NO.
A	010407	010407	TT	T.Thorne	122006	A	Doc100-036
				ENGR	C.Pfehl	REV. A	

PROPRIETARY THIS DRAWING, DATA, AND INFORMATION ARE NOT TO BE REPRODUCED, COPIED, OR TRANSMITTED IN ANY FORM OR BY ANY MEANS, ELECTRONIC OR MECHANICAL, INCLUDING PHOTOCOPYING, RECORDING, OR BY ANY INFORMATION STORAGE AND RETRIEVAL SYSTEM, WITHOUT THE WRITTEN PERMISSION OF ALLTRAX INC.		1111 Cheney Creek Rd. Grants Pass, OR 97527 PHONE:(541) 476-3585
--	--	--

DO NOT SCALE DRAWING